

CI/SfB	(87)	X	(U35)



www.chilterninvadex.co.uk

Moving and Handling

Wispa™ Lite Portable Hoist

The versatile Moving and Handling solution for the home, hospital and care environment



Moving and Handling

Wispa Lite Portable Hoist

The versatile Moving and Handling solution for the home, hospital and care environment

Chiltern Invadex introduces the Wispa Lite, a portable hoist with a 200kg lifting capacity. The Wispa Lite is the ideal moving and handling solution for the home, hospital and care environment, with value added functionality and a compact, lightweight design.

Adaptable Easy to transport

Lightweight construction combined with an integral carry handle enables the Wispa Lite to be easily moved between different locations, attached/removed from the ceiling track and repositioned wherever it is required.

Powerful Lift

Powerful, controlled lifting -
Maximum load 200kg (31 stones)
(440lbs).

Room to Room

The Wispa Lite can be moved effortlessly from room to room, without the need to reposition the client.

Varied Usage

Compatible with ceiling track or freestanding gantry systems offering controlled transfer from the bed, wheelchair or floor.

Carer and User Friendly Lightweight

The Wispa Lite is easy to carry, attach and remove from the ceiling track.



Handset

Clearly identifiable buttons, ergonomically designed.

Smooth Lifting

Soft start/stop lifting for added user comfort, safety and control.

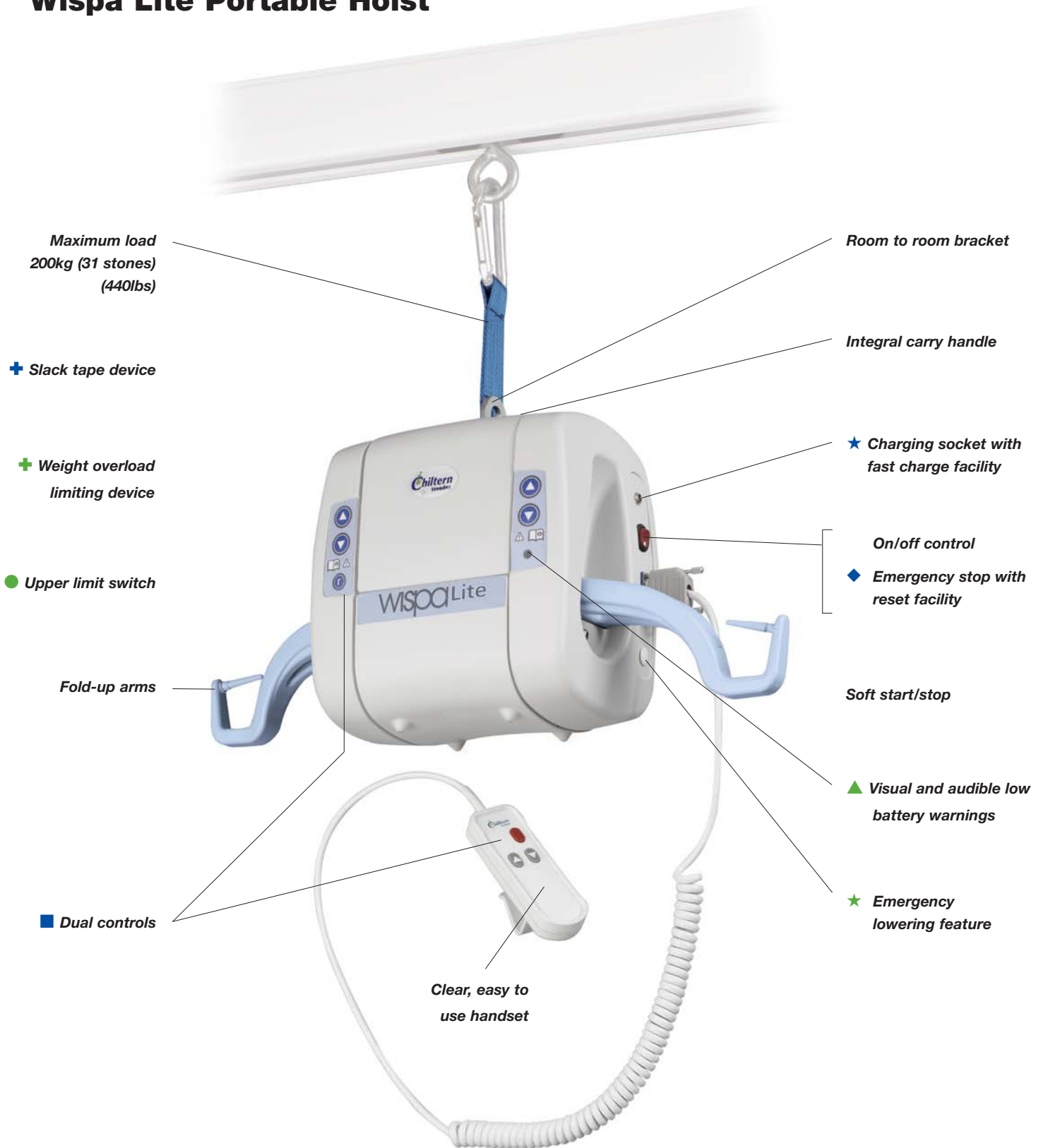
Comfortable Lifting

Enhanced sling attachment design offers wider sling positioning to improve user comfort, whilst providing maximum head clearance.

Easy to connect to track

With varying lengths of lanyard and attachment handle, carers can comfortably attach the Wispa Lite to ceiling track, whatever its height.

Wispa Lite Portable Hoist



Maximum load
200kg (31 stones)
(440lbs)

Room to room bracket

+ Slack tape device

Integral carry handle

+ Weight overload limiting device

★ Charging socket with fast charge facility

● Upper limit switch

On/off control

◆ Emergency stop with reset facility

Fold-up arms

Soft start/stop

▲ Visual and audible low battery warnings

■ Dual controls

★ Emergency lowering feature

Clear, easy to use handset



The Wispa Lite is compatible with most proprietary gantry systems. Please contact Chiltern InvaDEX for advice.



Accessories

- Transfer Trolley
- Attachment handle
- Lanyard (length options)
- Comprehensive range of Slings, Standing Jackets and Accessories

Wispa Lite Integral Safety

● **Upper limit switch**

Prevents the lifting tape from over-winding into the case and up to the ceiling track.

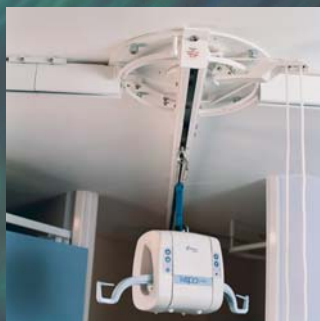


■ **Dual controls**

Wispa Lite can be operated via controls on the cover or from the handset, thereby reducing risk of not lifting/lowering clients if the handset is lost or damaged.

◆ **Emergency stop with reset facility**

Safe operation, should an emergency arise, providing reassurance for both user and carer. The hoist is easily reset via the handset or controls on the hoist.



+ **Slack Tape device**

This mechanism prevents the lifting tape from winding out of the cassette when an obstruction is encountered during lowering, preventing jamming of the tape.



+ **Weight overload limiting device**

If too much weight is applied, the Wispa Lite will only allow lowering.

Easy recharge facility

Visual and audible warnings indicate when the hoist should be recharged. With its integrated recharging feature, the Wispa Lite can simply be plugged into the nearest mains socket.

★ **Emergency lowering**

In the event of hoist failure, Wispa Lite is fitted with an emergency lowering switch providing safe, controlled descent.



★ **Fast Charge**

Wispa Lite can be fully charged within 2 hours.

Robust Design

Vigorously tested to ensure long product life expectancy.

▲ **Self-diagnostics**

Audible (from hoist and handset) and visual signals (on hoist cover) indicate faults and battery status.

Warranty/guarantee

Wispa Lite comes with a two year guarantee*.

Service & Maintenance

A nationwide team of engineers provide 24/7 support 365 days of the year.

**Conditions apply.*



Chiltern Invadex – the Complete Moving and Handling Solutions Provider

Flexible track options and accessories

Turntable: Adding flexibility to track layout.
Manual or powered model options.
Points: Changes track direction.
X-Y System: Efficient room coverage.
Bends: Available in 15°, 30°, 45°, 90° sections.



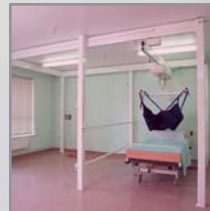
Comprehensive Sling Range

Lightweight, flame retardant and durable material.
Colour coded straps for quick and simple size recognition.
Paediatric sizes and material available.



Bariatric Solutions – Wispa Twin Cassette

Safe working load: 445kg (70 stones) (998lbs)
Free standing gantry system



Fixed Ceiling Track Hoist – Wispa™ 100/200/300 Series

Maximum load: 100 series 130kg (20 stones) (286lbs)
200 series 200kg (31 stones) (440lbs),
300 series 272kg (42 stones) (598lbs).
Manual and powered traverse options.
Optional Infrared control.



Survey and Installation

Our nationwide team of trained engineers can quickly install your equipment, and service and maintain it to comply with LOLER regulations, on a 365 days/24 hour per day basis.

Extended Warranty Programmes

Chiltern Invadex Super Care Warranty covers the full cost of breakdown (both parts and labour) for a period of up to five years. Please ask for details.





Solutions for Living

Chiltern Invadex Ltd
 Chiltern House
 6 Wedgwood Road
 Bicester, Oxfordshire
 OX26 4UL
 Tel: 01869 246470
 Fax: 01869 247214
 E-mail: sales@chilterninvadex.co.uk
 Web: www.chilterninvadex.co.uk

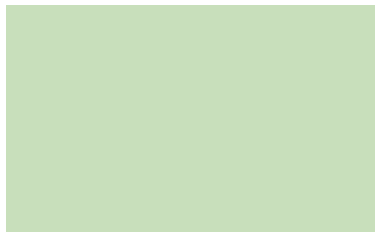
Overseas Enquiries
 Tel: +44 (0) 1869 365545
 Fax: +44 (0) 1869 365567
 E-mail: export@chilterninvadex.co.uk

Chiltern Invadex (NI) Ltd
 5 Balloo Way
 Balloo Industrial Estate
 Bangor, County Down
 BT19 7QZ
 Tel: 028 9145 0497
 Fax: 028 9127 0046

From Eire
 Tel: 048 9145 0497
 Fax: 048 9127 0046

Chiltern Invadex Ltd
 Unit 16 Evans Business Centre
 68-74 Queen Elizabeth Avenue
 Hillington Industrial Estate
 Glasgow
 G52 4NQ
 Tel: 0141 880 9986
 Fax: 0141 880 9990

Please contact your local distributor



Bicester is BS EN ISO 9001 approved (FM 40009).

Bangor Northern Ireland is BS EN ISO 9002 approved (FM 21085).

Copyright © Chiltern Invadex Ltd

The design of the product shown on this brochure is vested in Chiltern Invadex Ltd and should not be copied or reproduced in anyway whatsoever without the express permission in writing of Chiltern Invadex Ltd.

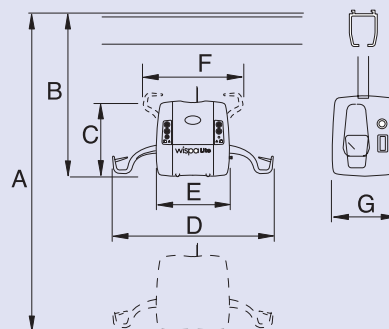
As part of our commitment to new product development we reserve the right to alter specifications without prior notice.

This is an original design of Chiltern Invadex Ltd in which Design Right subsists. Dimensions are for guidance only.

Published by: Chiltern Invadex Ltd, 6 Wedgwood Road, Bicester, Oxon, OX26 4UL Registered in England No: 1182024 ISSUE 2 Aug 2004

In Northern Ireland: Chiltern Invadex (NI) Ltd, 5 Balloo Way, Balloo Industrial Estate, Bangor, County Down, BT19 7QZ Registered No: NI 19958

Technical Information							
	A	B	C	D	E	F	G
Wispa Portable Lite	2720mm (8ft 11")	520mm (20.5")	250mm (10")	530mm (21")	240mm (9.5")	380mm (15")	170mm (7")
Features							
Power Source	Battery						
Emergency Stop	●						
Emergency Lowering	●						
Cordless Operation	●						
Battery Low Indicator	●						
Onboard Battery Power	●						
Manual Traversing	●						
No: Lifts per Charge	40						
Lifting Speed	0.04m/s						
Battery Voltage	24VDC						



Approval standards

CE Mark: The Chiltern Invadex Wispa Lite Portable Hoist carries the CE Mark and complies with EC Directives:-

Medical Device Directive (93/42/EEC)

EMC Directive (89/336/EEC)

Low Voltage Directive (73/23/EEC)

Manufactured and tested to BS EN 10535: 1998

Wispa is a trademark of Chiltern Invadex Ltd. There are patents pending in respect of this product.

Other products available from Chiltern Invadex include:

Showering and Bathing

- Shower Cubicles
- Shower Accessories
- Shower Seats and Stainless Steel
- Shower Chairs
- Shower Trolleys and Stretchers
- Walk-in and Easy Transfer Baths
- Level, Easy and Step-in Showers

Moving and Handling

- 100 Series Ceiling Mounted Hoists
- 200/300 Series Ceiling Mounted Hoists
- Wheelchairs
- Slings, Standing Jackets and Accessories
- Poolside Hoists
- Mobile Hoists

Extended warranty and service programmes and full service contracts available on all hoists to comply with LOLER (1998) regulations.

Brochure Hotline: 0800 917 0399