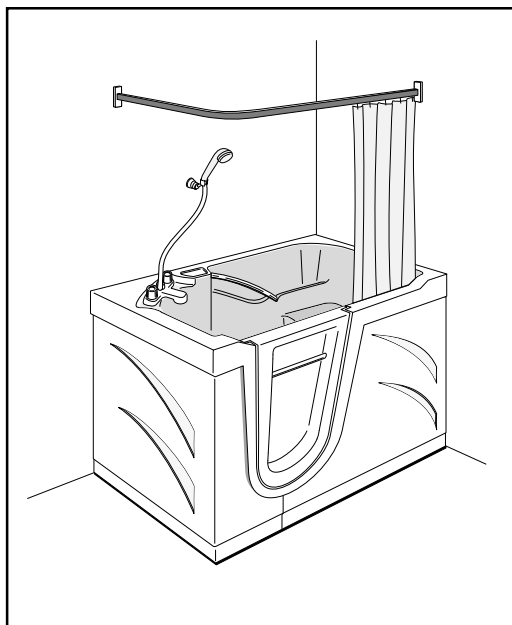


Walk-in Bath

user and installation guide



Walk-In Bath

Contents

Safety	2
Cleaning & Maintenance	3
Operation Guide.....	4
Installation and notes	6
Bath fitting instructions	7
Accessories.....	14
Warranty	15

These products have been designed to the highest standards with safety, strength and quality in mind.

Follow the recommendations in this guide to ensure maximum benefit from your Walk-in Bath.

Safety

- All users should be aware of the step when entering or leaving the bath.
- A carer should be present if there is any potential risk to the bather. An alarm or other means of communication should be considered if the bather is to be left alone.
- Always ensure the door lock is fully secured prior to filling the bath.
- Ensure all items for bathing including towels, flannel, soap, shampoo etc are within reach when sat in the bath.
- Monitor temperature of incoming water.
- Cross infection
Warning: If this unit is to be utilised by many different bathers then we would strongly recommend that it is cleaned with a medical disinfectant. Please consult your local infection control nurse for further advice.

Cleaning and maintenance

The Walk-in bath does not require any major maintenance, but you should follow these simple instructions.

To retain the surface quality of your bath weekly cleaning using bathroom cleaning mousse or washing-up liquid, warm water and a soft cloth is recommended. For the slip resistant floor area you may need to use a stiff brush. Stubborn stains may require a non-scratch liquid cleaner.

Do not use oven cleaner or scouring powder on any of the surfaces which may spoil the appearance of your bath.

Remove the pop-up waste to clear any soap residue or hair from the bath drain outlet and leave in the open position.

Wipe clean door seal rubber to ensure a good seal.

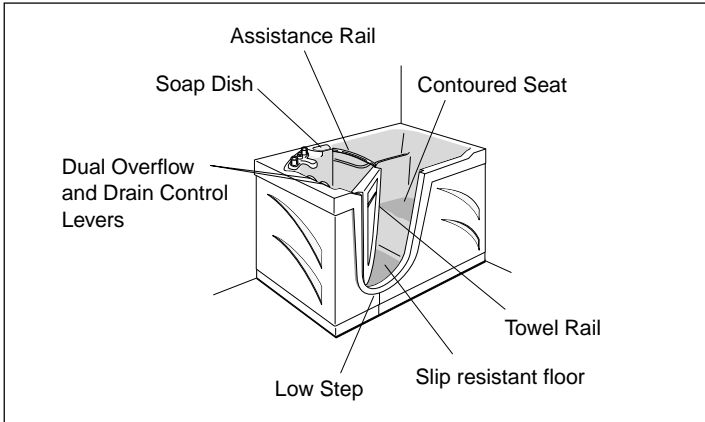
Always leave the door open after use to allow the seal to dry.

Shower head (handset optional)

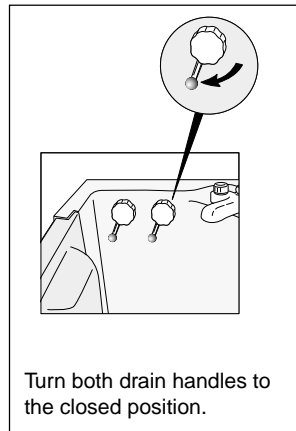
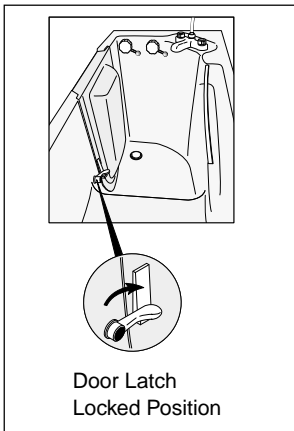
If you live in a 'hard water' area the holes in the shower head will block more quickly. This will result in a poor spray. Remove handset and clean using proprietary shower handset de-scaler. Check that all holes are clear after soaking. Repeat process if there is excessive build up, until clear.

Operation guide

- All users should follow these simple instructions prior to use:-

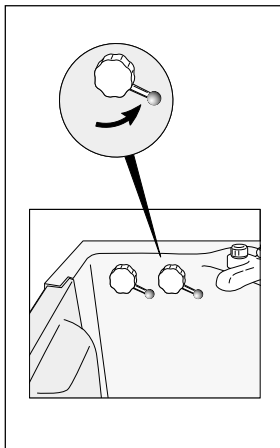


- Open the door and walk into the bath. When comfortably seated secure the door by use of the door lock.

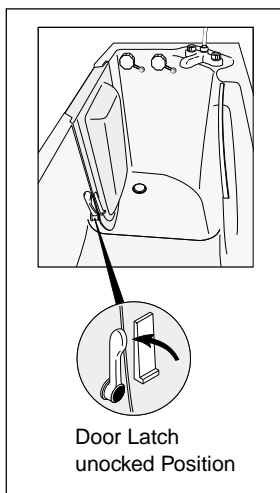


- Gradually turn on hot and cold water taps and adjust balance until a comfortable water temperature is achieved.
- A Chiltern Invadex thermostatic blender is available from your supplier if safe water temperature control is difficult.
- Fill bath to desired level, adjusting cold and hot taps as necessary.

- When bathing is completed turn both drain handles to open the waste plugs. (Do not attempt to open the door until all the water has drained away).



- To open door raise locking lever to the vertical position. Open the door and step out paying careful attention to the step on the way out. Leave the door open after use to allow the seal to dry.



- Clean bath after use (see cleaning and maintenance section).

Installation

General guide

All installation work should be carried out by qualified personnel complying with all relevant regulations and byelaws.

All services should be complete and tested before attempting the installation.

All building work and decorating should be finished i.e a suitable floor in place, skirting boards painted and fixed, walls and ceilings plastered.

Technical assistance

Should you require any technical assistance or have any queries regarding installation procedures contact your walk in bath supplier. For an efficient response it would help if you have the model type and serial number to hand when you call (the serial number can be found on the label on the bath frame and at the back of this guide).

Services - Incoming Water

The installation must be in accordance with local water company byelaws. We recommend 22mm feed pipes to the selected taps/mixer. This will allow maximum water flow to fill the bath. Accessible Isolating valves need to be fitted /be available to facilitate future servicing.

Important Notes:

The bath shell/frame assembly must be securely fitted to a sound wall and floor surface.

The bath must be level along both planes.

The bath end panel must be readily removable to allow future servicing.

If this product is for use in a hospital/nursing home environment a Chiltern Invadex Thermostatic Mixing Valve (TMV3 approved) must be installed, and is available as an option from your supplier.

Waste water

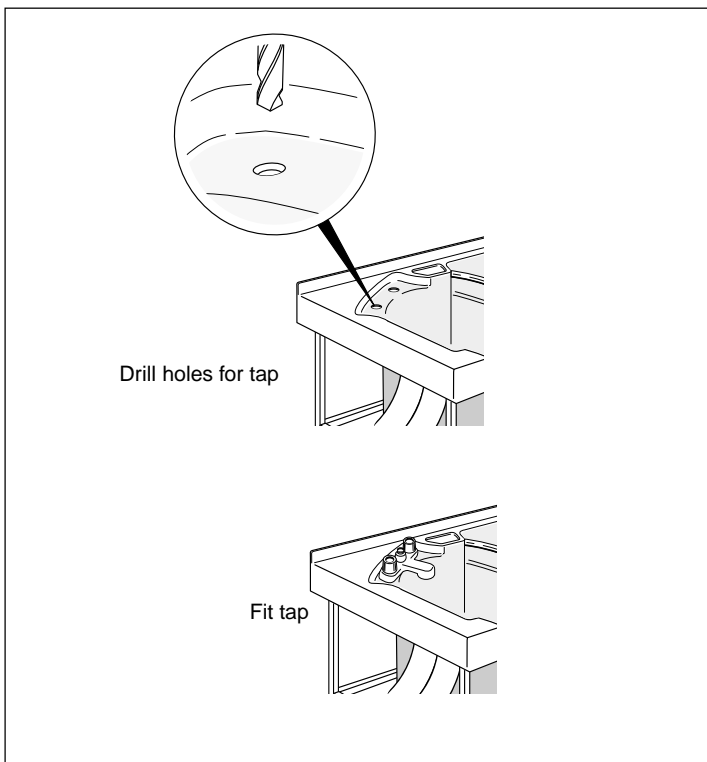
A dedicated 38mm (1 1/2") plastic waste pipe is required which must not be connected into the existing pipework.

Bath fitting instructions

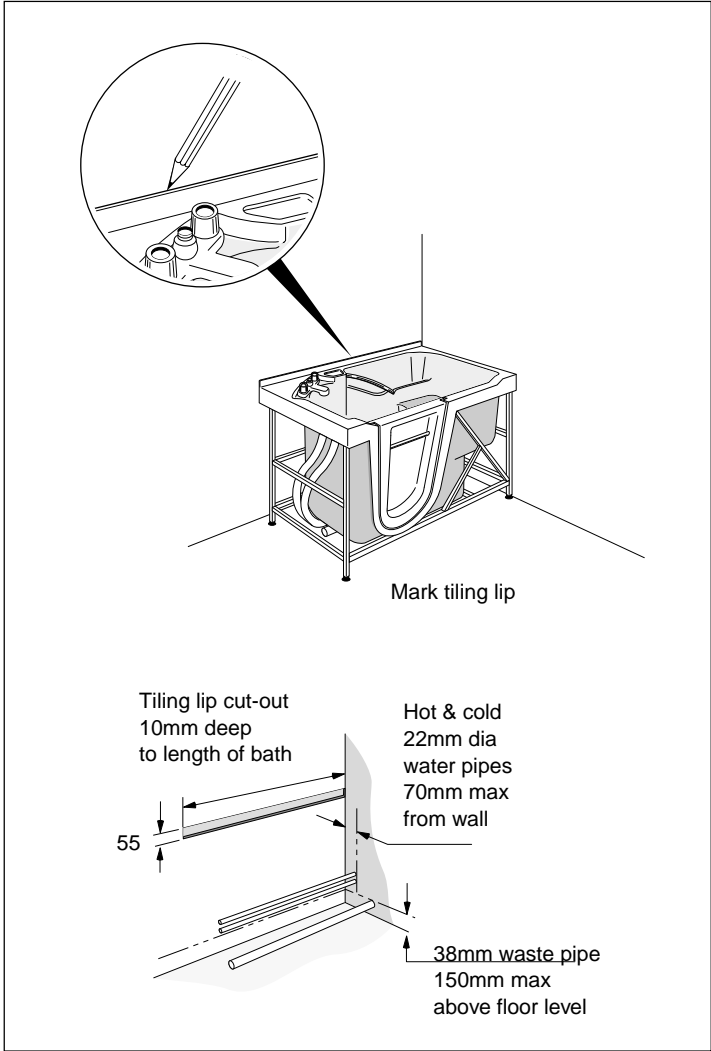
Positioning and securing the bath

Note: During installation protect bath from damage and floor surface from scuffing by using cardboard packaging.

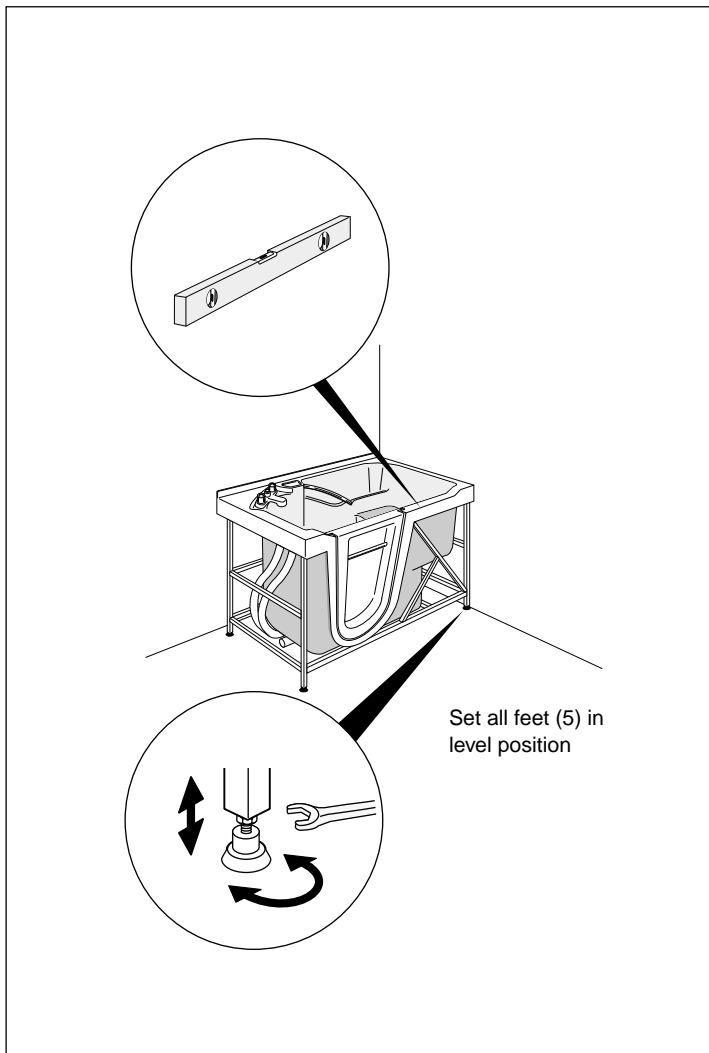
1. The bath must be installed with a minimum clearance of 165mm at the tap end. This allows access to pipework. This bath must never be positioned with the tap end fitted flush against a wall.
2. Any boxed in sections should be removable for easy maintenance.
3. Complete all plumbing work before positioning bath.
4. Unwrap bath and remove all packaging.
5. Mark and drill position for taps or mixer.
6. Install taps/mixer.



- 7. Place bath in desired position. Level the bath along both planes, as shown opposite. Go to page 10 if the bath is not to be tiled in.
- 8. Mark walls for recessing tiling lip.

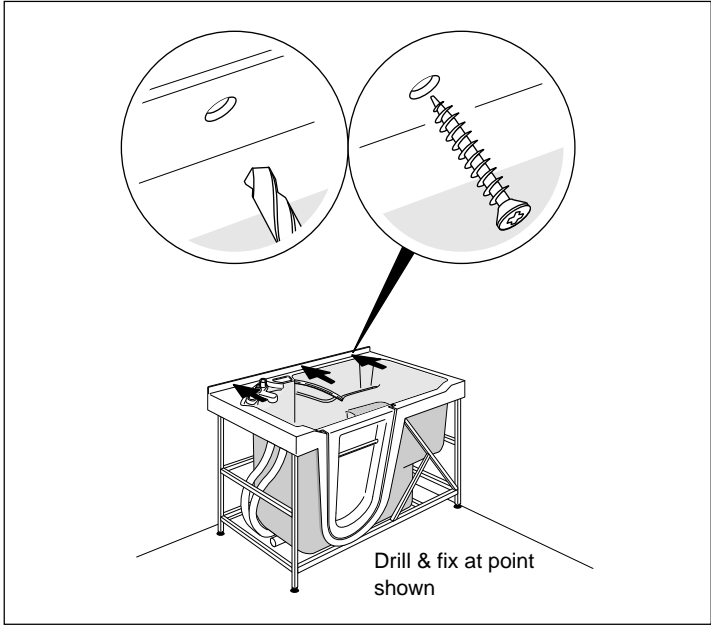


9. Take the bath away to allow access for removal of plasterwork from side and end wall.
10. Remove the plaster below the mark to a depth suitable to take the tiling lip.



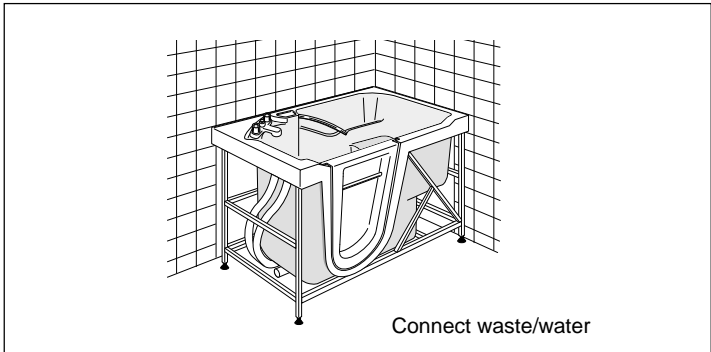
Drilling The wall & Fixing

- Drill the wall using a 5mm drill, countersink and plug the holes. If the bath is not to be tiled in, finish with a bead of waterproof sealant. Secure the tiling lip to the wall using stainless steel screws provided.



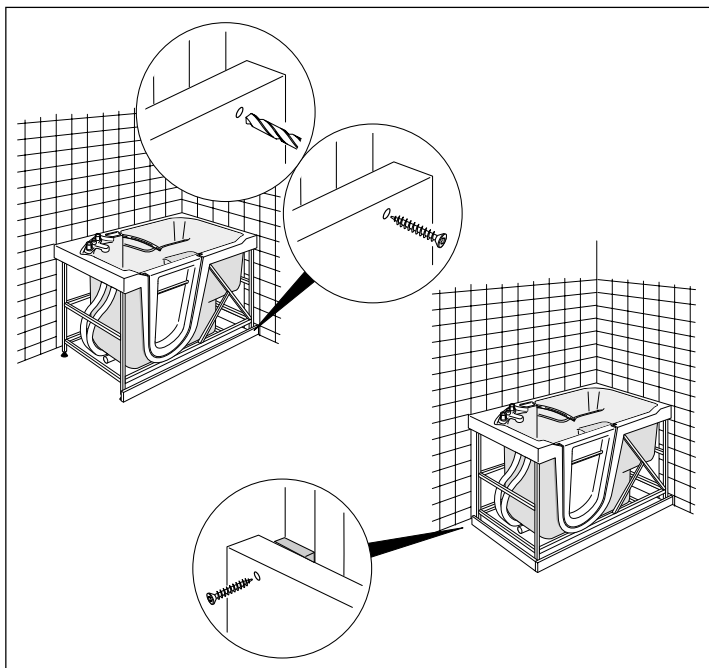
Make good plaster work

- Tile down to the angle of the tiling lip using waterproof adhesive and grout.



Connecting Water/Waste

- Using flexible pipes or hard plumbing connect to taps/mixer.

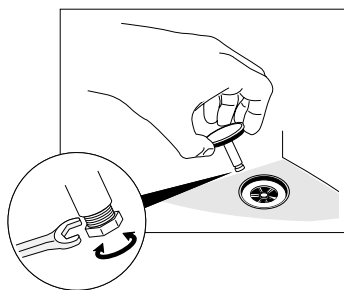


Waste water

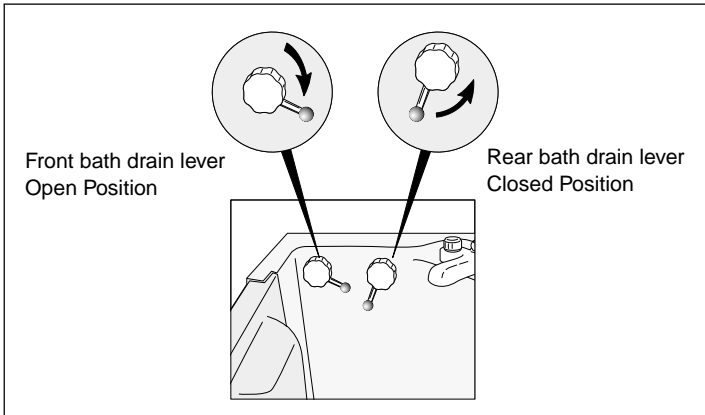
- Connect waste pipe to outlet connection on bath.

Testing the pipework

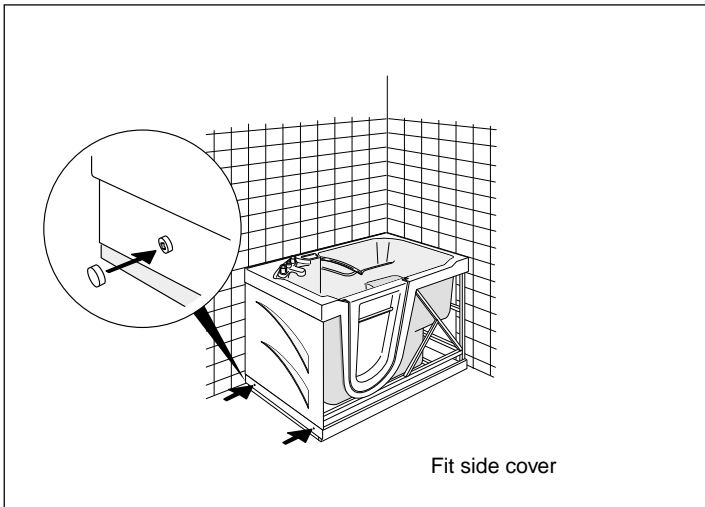
- Flush all pipework prior to connecting to taps to remove any debris.
- Check for any leaks in the pipework.
- Check pop-up waste for seal and lift. To adjust plug turn screw on the bottom of the plug to raise or lower plug into seating.



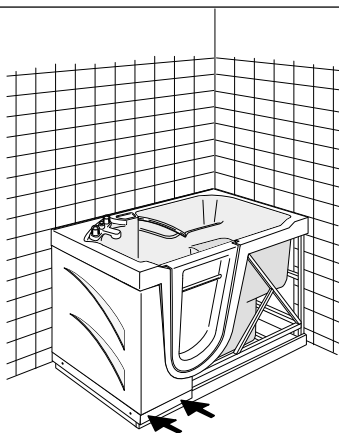
- Check door locking lever secures door correctly.
- Fill bath to overflow level to check for leaks in the door seal and to make sure that the overflow pipe is working correctly. Sometimes, after checking the overflow the longest pop-up waste will not open. To overcome this, open the small waste first. The long one will then open.
- Drain the bath by rotating the control knobs to lift the pop-up wastes. Check for any leaks in the waste pipework.



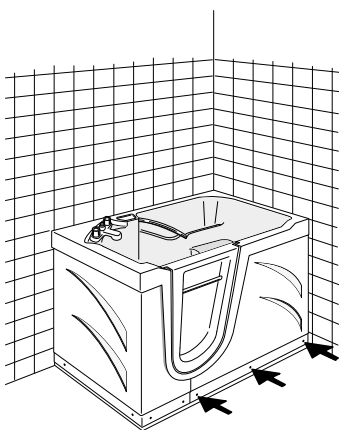
Fitting panels



Fit both side panels and end panel.

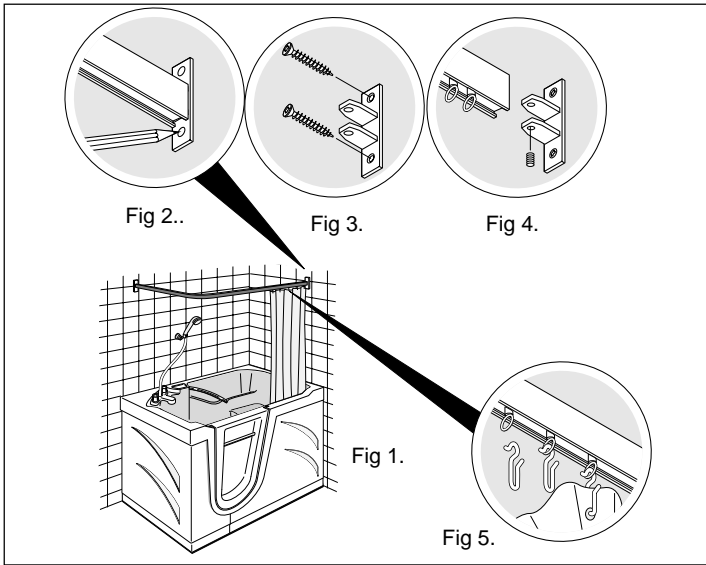


Fit left hand front cover



Fit right hand cover

Fixing the Curtain Rail (optional).



Fitting the curtain rail

- Position curtain rail at a suitable height as Fig 1, ensuring that the curtain falls inside the bath to avoid water leakage. Mark walls for fixing wall brackets as Fig 2. Drill wall with 5.5mm drill to a depth of 2" (50mm).
- Fix curtain rail brackets to wall with plugs and 1 1/2" x 8 screws, as Fig 3 and Fig 4.
- Load hooks and glides into bottom channel of curtain rail as Fig 5. Attach curtain rail to brackets and tighten using Allen key. Attach shower curtain to hooks on rail.

Accessories

1 Bath taps with 3" lever-see choice in Chiltern Invadex Showering and Bathing Accessories brochure.

2 Thermostatic shower/mixer	1 IDBSM3000
3 Thermostatic mixing valve	1 IDTBV003
4 Twin impeller booster pump	1 SHPU015
5 Deva standard mixer tap-no shower	1 IDSEN08
6 Steel braided flexible pipes 22mm	2 BAO832
7 Cushion	1 BAO833

8 Curtain rail and curtain options

Please contact your supplier for details of any of the above accessories.

Warranty

Your Chiltern Invadex Walk-in Bath carries a 12 month warranty from the date of purchase (for guarantee on taps and shower unit see manufacturers details) subject to the following:-

1. Should you experience any problems with our workmanship or materials within the first 12 months period, you must contact your point of purchase.
2. Repairs made during the warranty period will be carried out free of charge, provided the product has been used strictly in accordance with the guidelines set out in this user guide.
3. Our warranty does not cover replacements, adjustments or repairs which may be required as result of normal wear and tear, wilful or accidental damage, misuse, neglect or any other cause which is beyond the control of Chiltern Invadex.
4. Modifications and repairs made to this product by unauthorised persons will render the warranty void.
5. Only parts manufactured or approved by Chiltern Invadex shall be used to repair this product. Use of unauthorised parts will invalidate all warranties and remove all liability from Chiltern Invadex for the safety of this product.
6. Chiltern Invadex shall in no event be liable for any damages, costs or expenses arising from any claim made under this warranty (save for any legal liability of Chiltern Invadex for death or personal injury resulting from the company's negligence in respect of its products).
7. Faults due to inadequate cleaning, limescale or other water impurities including debris not flushed from the supply pipe work prior to connection are excluded from this warranty.
8. This warranty does not affect your statutory consumer rights.

Thermostatic Mixing Valve - Maintenance Log Sheet

Hospital/Nursing home

Ward/Location

Asset ident/Valve No.

Installation date

Manufacture

Model, type and designation of TMV

Point of delivery see note 1

Set water temperature at outlet °C see note 2

Location/access to TMV see note 3

Location of hot and cold isolation valves

Hot and cold water supply pressure

History: see note 4

Date	Starting Temp °C	Finished Temp °C	Work details	Signature of competent person

Notes:

1. Point of delivery: bath, shower, wash hand basin, bidet, etc.
2. Set water temp at outlet: refer to Trust policy guidance and risk assessments.
3. Location/access of/to the TMV - under wash hand basin, panel access in wall, ceiling, floor etc.
4. History: state whether new, new replacement, refurbished, what parts were replaced, adjustments made etc.

All entries must be signed by a competent person.

When any work or adjustments are made to the TMV, always record the TMV water outlet temperature BEFORE and AFTER the work or adjustment to the TMV.

Please fill in the information below for future reference

Dealers Name

.....

Address

.....

.....

..... Post Code.....

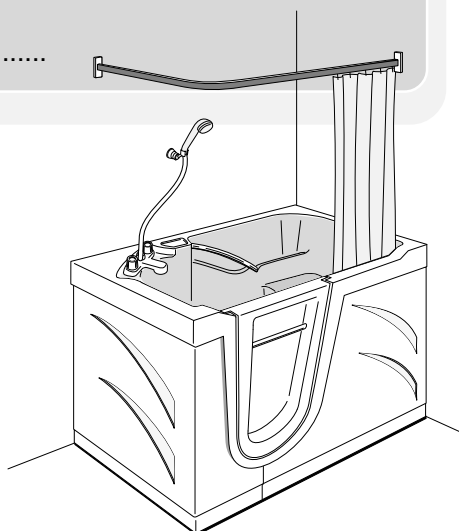
Telephone

Your Serial Number is

.....

Date of purchase

.....



Walk-in Bath

Supplied by:

