



closomat®



Palma Vita

- Provides 'hands free' automatic flushing, warm water washing and warm air drying
- User friendly for people who have restricted use of their hands
- By reducing hand contact it also provides improved hygiene for all users
- WRAS approved product
- Accessories include touch sensitive switch for those unable to use standard elbow pads. Air operated, floor or wall mounted.
- Raising plinth for use with a shower chair (recommended max 50mm) or to ease direct wheelchair transfer. Plinth is not visible when installed - heights 25, 50, 75, 100mm
- Robust and secure support arms. Folds out of the way to aid side transfer from a wheelchair
- Extended douche - twin spray (female use only) or single extended douche
- Optional lateral body supports for extra support and stability

| code | product |
|---------|--|
| IDTCS11 | Palma Vita WC Single Spray (this item must be commissioned by Closomat to activate warranty) |

Please note: Palma Vita price includes any Douche arm (standard single spray, extended single spray, or twin spray)

Palma Vita Accessories

| code | product |
|-----------|---|
| IDPVTC05 | Integrated fold-down support arms - independent arms (Load tested to 25 stones) |
| IDPVTC10 | Lap strap |
| IDPVTC02 | Touch sensitive hand/foot switch |
| IDPVTHP01 | Shaped plinth (25mm) |
| IDPVTHP02 | Shaped plinth (50mm) |
| IDPVTHP03 | Shaped plinth (75mm) |
| IDPVTHP04 | Shaped plinth (100mm) |
| IDPVTC15 | Lateral body supports (clip in to support arms - order support arms with this option) |
| IDPVTC04 | Standard soft seat 'adult'* |
| IDPVTC06 | Junior soft seat* (for clients who may slide through a standard seat) |
| IDPVTC07 | Open fronted soft seat* |
| IDPVTC12 | Palma wall infill panel |
| IDPVTC13 | Remote control |
| IDPVTC14 | Back bar (kit) |

*Note: only available in blue



Touch sensitive switch



Raising plinth



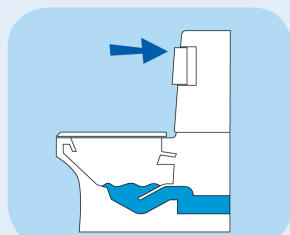
Support arms



Lateral body supports



Extended douche arm



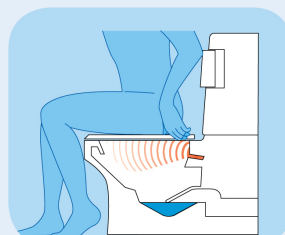
Flushing

Press either elbow pad whilst standing for conventional flush.



Washing

Press elbow pad whilst seated and hold down for approximately 10-15 seconds, flushing and warm water washing will then take place.



Drying

Warm air drying automatically follows when elbow pad is released.

Chair compatible



AUTOMATIC WC SHOWER TOILET

NEW Palma Life

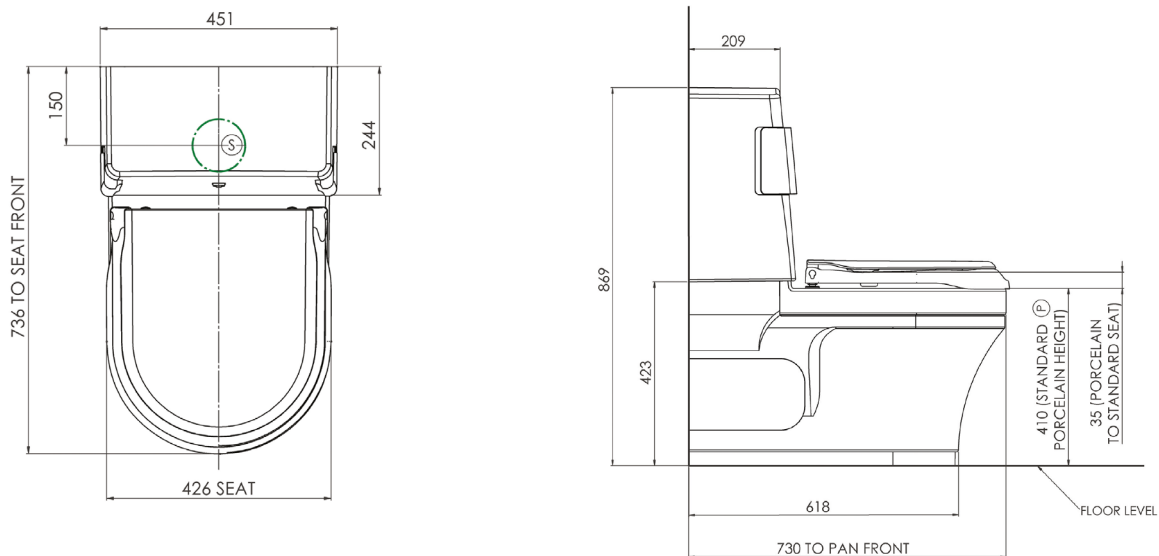
closomat®

The Palma Vita is now available to purchase complete with an all inclusive 10 year warranty providing service and maintenance cover.

| code | product |
|---------|--|
| IDTCS13 | Palma Vita WC Single Spray incl 10 Year warranty (this item must be commissioned by Closomat to activate warranty) |

Please note: Palma Vita price includes any Douche arm (standard single spray, extended single spray, or twin spray)
For accessories, refer to page 90.

Technical Information



Electrical services

- Electrical installation should be in accordance with I.E.E. Regulations (Current Edition).
- 220v/240v single phase AC supply is required, (fuse loading 6 to 8 amp, maximum power 1500 watts). The Clos-o-Mat is supplied with 3 core cable attached. A fused spur is required.
- The spur outlet is normally located adjacent to the unit preferably R.H.S. facing.

Bathroom/Shower Room Installations

- Particular attention should be paid to I.E.E. Regulations when the unit is to be fitted in a bathroom or shower area. We recommend isolation external to the room.
- I.E.E. Regulations require a Residual Current Device to be fitted to the circuit to ensure that disconnection occurs within 0.4 seconds in the event of earth fault.
- The Clos-o-Mat must not be in direct line with the shower spray. Some form of partition between shower and Clos-o-Mat is advisable to prevent any water spraying directly on to the equipment.
- A shower should not be used in conjunction with the Clos-o-Mat. i.e. Under NO circumstances must a user shower whilst seated on Clos-o-Mat.

Water services - No external hot water supply is required.

- Cold water service only; water supply can be from level storage or mains. The Clos-o-Mat is supplied with 15mm copper spigot and isolating valve on cold water supply

Soil Connection

- Outlets are suitable for 'P' trap through the wall (220mm floor to centre) or 'S' trap through the floor (70mm–250mm finished wall to centre). Suitable for left hand and right hand turned trap applications

Overflow

- The Clos-o-Mat has an internal overflow which discharges into the W.C. pan through the flush valve.

Further Notes

- No permanent hand rails or other obstructions should be fitted across the front or top of the unit. The white outer case has to be pulled upwards and forward to remove for service access.
- If extended douche option is specified, space must be made to accommodate douche arm which extends beyond rear of casing.
- Optional infill panel available to avoid need to chase wall. Unit can be fitted away from rear wall if required.





closomat®



Asana

- Provides 'hands free' automatic flushing, warm water washing and warm air drying
- User friendly for people who have restricted use of their hands
- By reducing hand contact it also provides improved hygiene for all users
- WRAS approved product
- Pneumatic, palm push and wave flush options
- Wall mounted can be concealed or there are optional surface mounted panels in various colour options
- Soft close seat
- Temperature controlled showering and warm air drying
- Automatic odour extraction

product

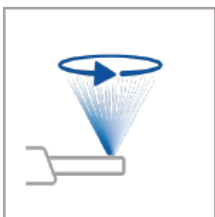
IDTCS14 Asana Auto WC concealed cistern (this item must be commissioned by Closomat to activate warranty)

Available to special order only due to available options. Please call for details.

Optional surface mount panels available



Wellness Programme



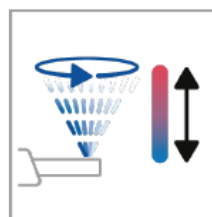
Touch once:
Rotating shower spray



Touch twice:
Pulsating shower spray



Touch three times:
Temperature-changing
shower spray



Touch four times:
All wellness functions
combined



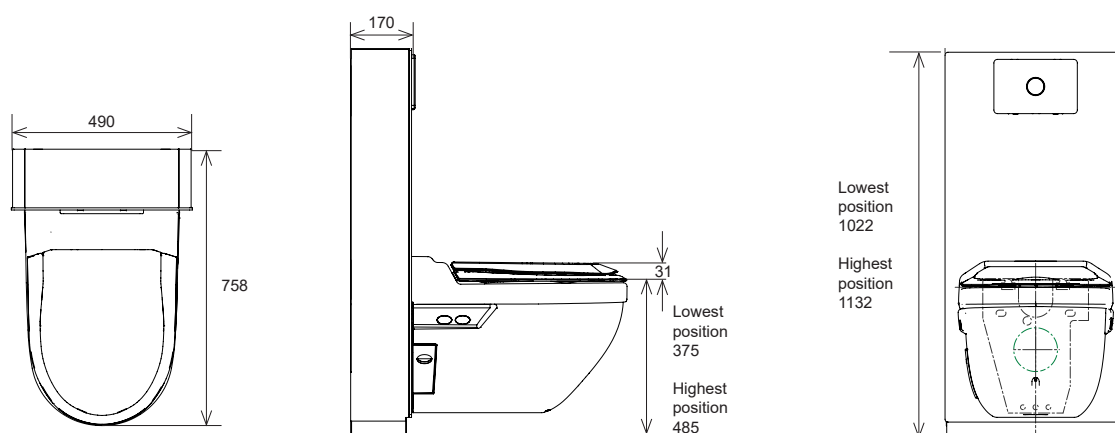
Touch five times:
Back to normal shower

Chair compatible



Bespoke shower chairs can be manufactured to suit installation height. Please call for details





Full installation and technical details can be provided on request, please contact our Customer Services team on 01869 365500 opt 1 or email us at sales@chilterninvadex.co.uk.